

The Masthead

Location: 1705 Cowichan Bay Road,
Cowichan Bay, BC

Other Names: The Masthead
Restaurant

Construction: Circa 1868



View of the Masthead from Cowichan Bay Road

Statement of Significance for the Masthead

Description of Historic Place

The Masthead is a four-storey wood framed building, with symmetrical wood-framed windows and a gable roof. This building is located at 1705 Cowichan Bay Road in Cowichan Bay, British Columbia. The form 1 recognition for this historic place is specific to the building footprint.

Heritage Value

Heritage value can be found in the Masthead's association with Giovanni Baptiste Ordano and the early development of Cowichan Bay. There is also significant value in the preserved character and materials of this historic building.

The Masthead is directly associated with Gioanni Baptiste Ordano, a European immigrant who is credited with invigorating the development of Cowichan Bay. Ordano built the Masthead as the original Columbia Hotel, a roadhouse for visitors traveling over the Malahat. The association with the individual who greatly affected

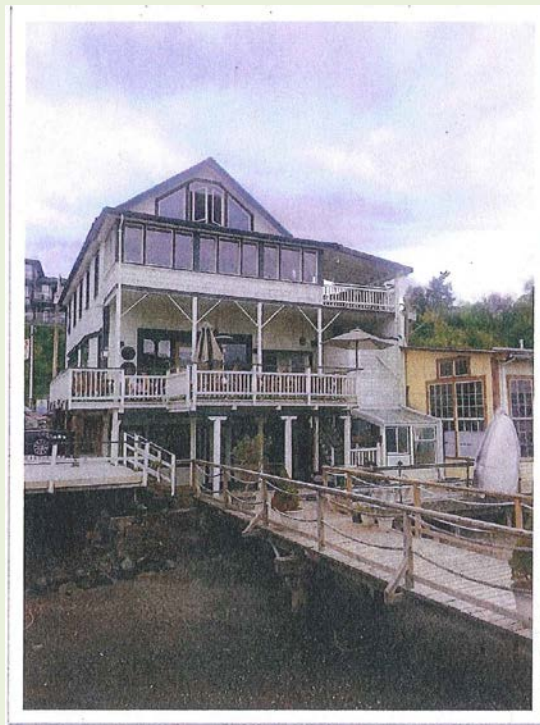
the development of Cowichan Bay is of immense heritage value to the community of Cowichan Bay.

Built in approximately 1868, the Masthead is one of the oldest existing buildings in Cowichan Bay. This building provides a clear representation of the early character and design of Cowichan Bay. The historic integrity of the original materials, such as the glass window panes, and the building character is of great heritage value.

Character-Defining Elements

Key elements that define the heritage character of the Masthead include:

- The original character and design from the Columbia Hotel
- The position on its original location
- The long-term use as a public amenity (as a restaurant)
- The Masthead's compatible character and design with the surrounding village of Cowichan Bay
- The picturesque deck, framing and character of the water-facing side of the Masthead
- Original materials including the glass windows and wood framing
- The clear visibility of the Masthead from both Cowichan Bay Road and the bay itself



View from the Bay